

굴삭기용 트리머

우성 트리머는 굴삭기의 암 선단에 장착하여, 일반차량이나 사람이 접근하기 쉽지 않은 가파른 경사지, 목초지, 야산, 구릉지, 과수원 및 용·배수로, 농로, 도로, 갯길 등지에서 잔가지나 잡초등을 빠른 속도로 자르고, 제초가 가능 할 수 있도록 개발된 제품입니다.



● ET1200 MINI

● ET1200

● ET1200 TILTING



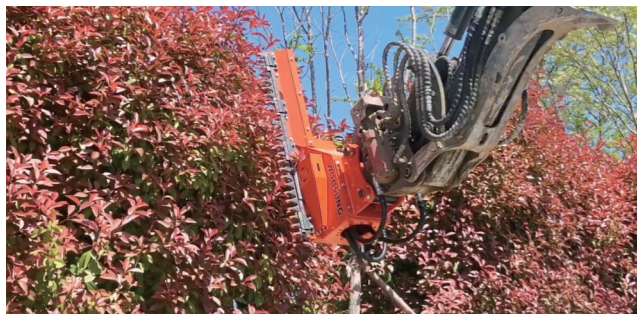
ET1200 MINI



ET1200



ET1200 TILTING



Sample photos of intended usage

특징



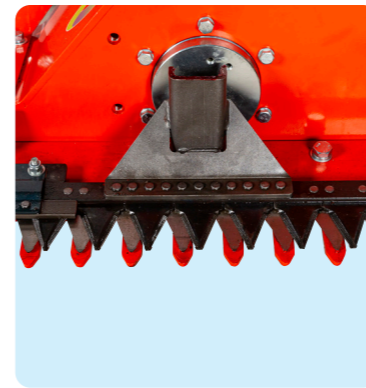
본체부분 360° 회전하면서 작업가능

01



가볍지만 매우 견고한 디자인

02



회전캠을 기반으로 한 작동

03



우수한 절단 성능과 내마모성을 보유한 칼날조합

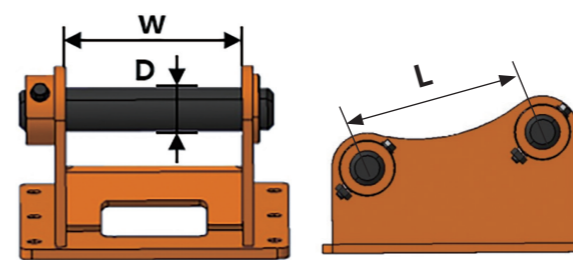
04

사양

* ET1200TILTING은 본체부분 360° 회전하면서 작업가능.

Model	ET1200MINI	ET1200	ET1200 TILTING
제초폭	1200mm		
제어유량	30~40L/min	50~70L/min	
상용압력	245kgf/cm ²		
나이프	Sickle Knife(낫칼)		
파쇄최대직경	10mm	20mm	
제품중량	90kg	110kg	250kg
적용굴삭기	1.7~2.5ton	3~6ton	

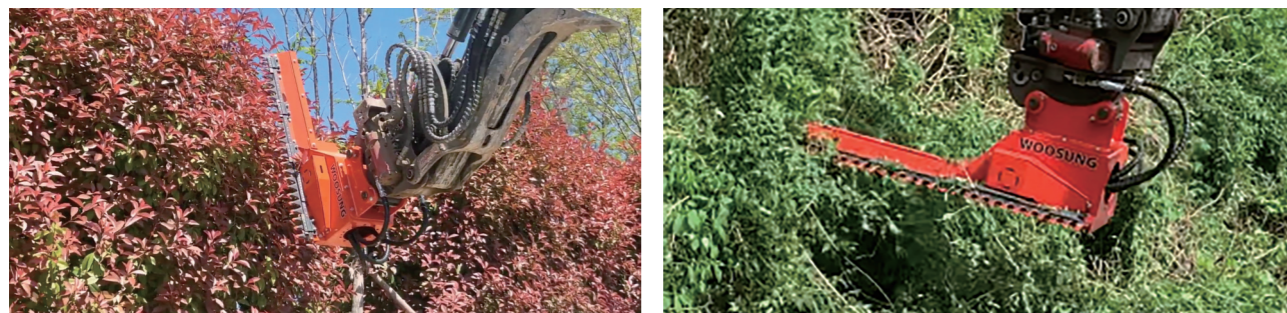
Types of Mount and Dimensions



Types	D(mm)	W(mm)	L(mm)
C	30	125	105
B	30	125	125
E	40	145	190
G	45	175	271

Excavator Mounted Trimmer

Our **ET series trimmers** are the product designed to trim hedges, bushes, grass, weeds, and perhaps pruning vines as well.



Sample photos of intended usage

Key Features



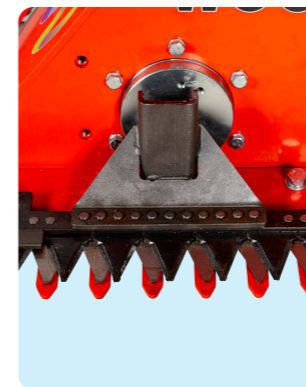
ET1200 TILTING:
This particular model can rotate the tilting angle 360 degrees.

01



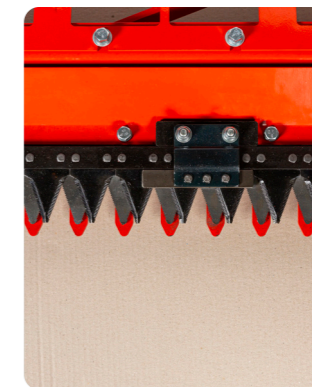
Lightweight, but very solid frame structure.

02



A rotating cam allows the reciprocating motion of the sickle assemblies.

03



Our uniquely designed sickle sections ensure excellent cutting performance and a long service life.

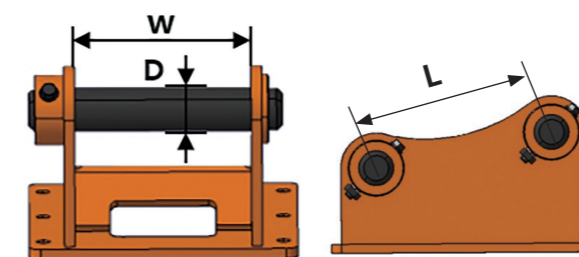
04

Specifications

* ET1200TILTING can operate while the main body rotates 360°

Model	ET 1200MINI	ET 1200	ET 1200 TILTING
Working Width	1200mm		
Flow	30~40L/min	50~70L/min	
Rated Pressure	245kgf/cm ²		
Number of Knives	Sickle Knife		
Suggested Maximum Shredding Diameter	10mm	20mm	
Weight	90kg	110kg	250kg
Applicable Excavator	1.7~2.5ton	3~6ton	

Available Mounting Bracket Designs and Corresponding Dimensional Specifications



Types	D(mm)	W(mm)	L(mm)
C	30	125	105
B	30	125	125
E	40	145	190
G	45	175	271